

# CASCADIA METALS

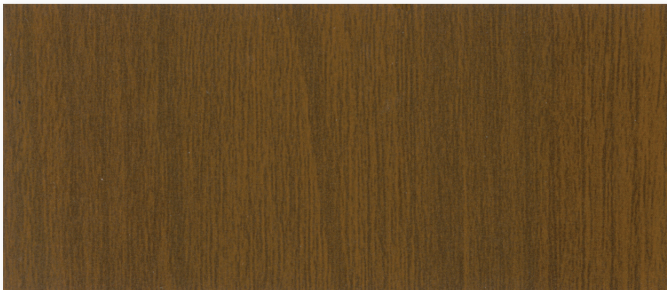
Cascadia Printech  
**WOODGRAIN SERIES**  
PVDF Prepainted Steel  
24ga, AZ50



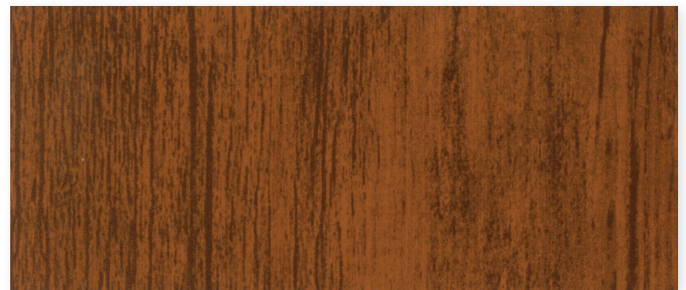
ACORN



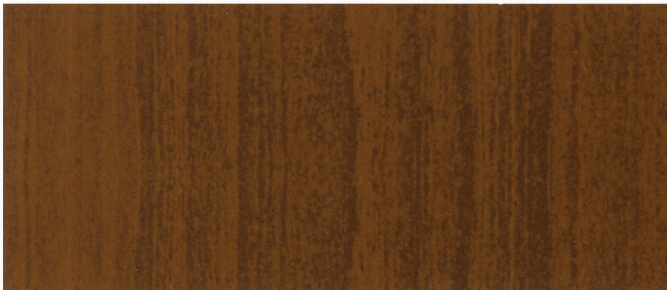
AUTUMN



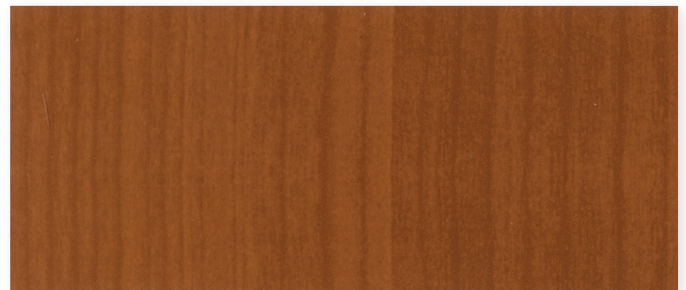
ESPRESSO



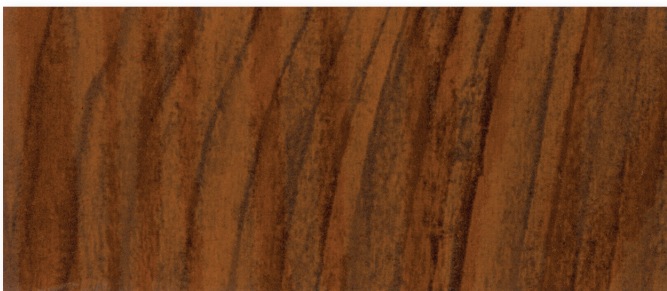
FRONTIER



GUNSTOCK



SADDLE



HERITAGE\*

(\*only available in 28 ga with a polyester paint system)

**For custom colors  
and/or print patterns,  
please contact your  
Cascadia Metals  
Sales Representative.**

The base metal for our Printech Woodgrain Series is a 55% Aluminum-Zinc Alloy Coated Steel.

Printech printed steel is batch sensitive and directional in nature. We strongly advise against mixing batches on any project.

The colors shown here are representative of the actual colors but are limited by printing conditions. Actual pre-painted metal samples are available upon request.

Additional sizes and colors may be available with a minimum order quantity. Inquire with your Cascadia Metals Sales Representative.

# The Printech Process

Printech® is a luxurious, value-add product offered by Cascadia Metals. Our Printech WOODGRAIN SERIES is available in a variety of natural colors and patterns offering an authentic woodgrain look providing the aesthetic you need for your project's interior or exterior applications.

Printech products are manufactured using an offset gravure printing process. The offset gravure printing process utilizes cylinders that have digital patterns etched into the surface. The etched cylinder rotates in an ink bath and ink collects within the etched pattern, with the excess ink being scraped from the cylinder. The inked pattern is then transferred from the etched cylinder to a rubber-covered transfer roll. From there the inked pattern transfers to the steel substrate by passing between the transfer roll and an impression roll.

**Printech** WOODGRAIN SERIES *...the aesthetics of wood with the benefits only steel can provide.*

| PROPERTY                  | PRINTECH COATING TEST METHOD   | PRINTECH COATING SPECIFICATION           |
|---------------------------|--|--|
| Dry Film Thickness        | ASTM D 1400-94   | 0.75-1.85 Mil                            |
|                           | ASTM D 1005-95   | 0.90-1.15 Mil                            |
| Specular Gloss            | ASTM D 523-89 @ 60°  | 10-15                                    |
| Humidity Resistance       | ASTM D 2247 (100% relative humidity @ 95°)                               | Passes 2,000 hrs. with no field blisters |
| Salt Spray                | ASTM B 117 (5% salt spray @ 95°)   | Passes 1,000 Hrs. with < 5% #6 blisters  |
| Acid Pollutant Resistance | ASTM D 1308-87 (20% sulfuric acid 18 hrs., 10% muriatic acid 15 minutes) | No effect                                |
| Graffiti Resistance       | ASTM D 6578 (Cleanability of Defaced Panels spray paint, pens, etc.)     | No effect                                |
| Abrasion Resistance       | ASTM D 968-93 (to expose 5/32" of substrate)                             | 100 Litres                               |
| Chalk Resistance          | ASTM D 4214 (Florida Exposure @ 45° S)                                   | Rating not < 8 @ 20 yrs.                 |
| Color Retention           | ASTM 2244 - Hunter Units (Florida Exposure @ 45° S)                      | Rating not > 5Δ Hunter Units @ 20 yrs.   |
| Adhesion                  | ASTM D 3359-95a (Reverse Impacted 1/16" crosshatched)                    | No adhesion loss                         |
| Pencil Hardness           | ASTM D 3363  | HB-H                                     |
| Reverse Impact            | ASTM D 2794-93 (3,000 x inches of metal thickness)                       | No cracking or loss of adhesion          |
| Flexibility T-Bend        | ASTM D 4145-83 (No crack, no pick-off)                                   | 2T bend, no loss of adhesion             |
| Mandrel                   | ASTM D 522-93A (180 bend around 1/8" mandrel)                            | No cracking                              |
| Film Integrity            |  | 25 years - limited warranty              |

Hunter Units: a standard of key color scales and color values that are used by industry for color control. Oil Canning is a characteristic of metal roofing and not a cause for material rejection.

## ALL THE SELECTION. ONE SOURCE.

Effective February 2016 and replaces all previous versions. Copyright 2016. The Cascadia Metals logo is a trademark of Cascadia Metals. Information and images are the property of Cascadia Metals and/or its affiliates and may not be reproduced without express written consent.