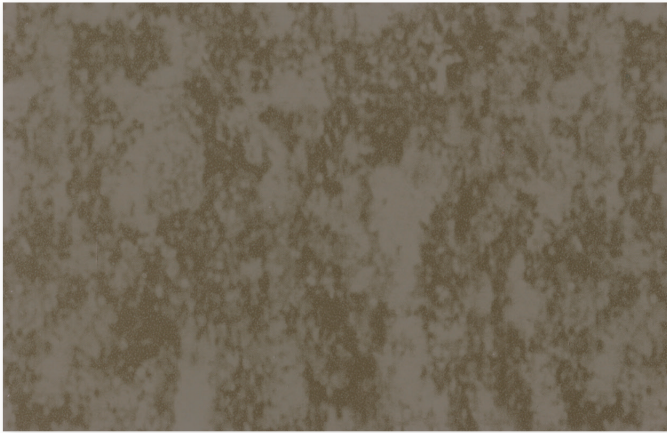


# CASCADIA METALS LTD.

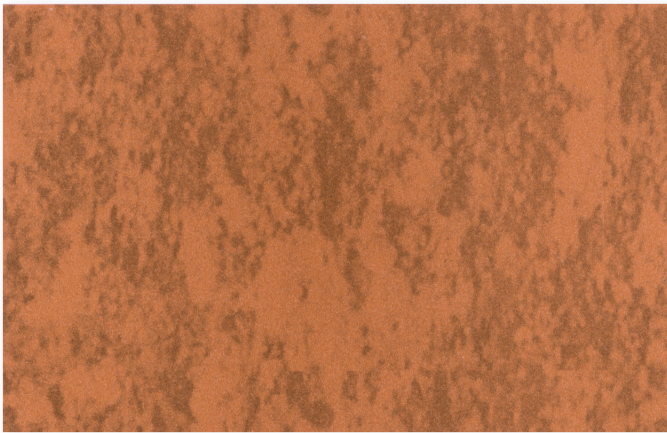
Cascadia Printech  
PVDF Prepainted Steel  
24ga, AZ50



TRAIL GREY



WOODGRAIN



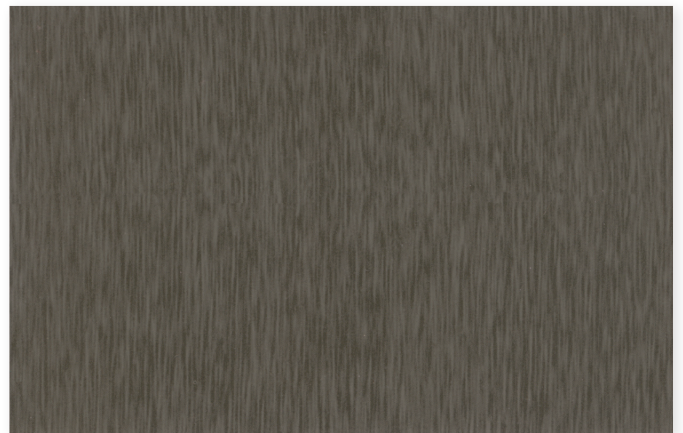
AGED COPPER



RUSTIC RED



LIGHT ZINC



DARK ZINC

The base metal for Printech is a 55% Aluminum-Zinc Alloy Coated Steel.

Printech printed steel is batch sensitive and directional in nature. We strongly advise against mixing batches on any project.

The colors shown here are representative of the actual colors but are limited by printing conditions. Actual pre-painted metal samples are available upon request.

Additional sizes and colors may be available with a minimum order quantity. Please inquire with your Cascadia Metals Sales Representative.

# The Printech Process

Printech® is a luxurious, pre-painted product offered by Cascadia Metals. Printech is available in a variety of sophisticated, natural patterns offering an elegant look to any building project's interior or exterior.

Printech products are manufactured using an offset gravure printing process. The offset gravure printing process utilizes cylinders (in this case mill rolls) that have digital patterns etched into the surface of the cylinder. The etched cylinder rotates in an ink bath and ink collects within the etched pattern, with the excess ink being scraped from the cylinder. The inked pattern is then transferred from the etched cylinder to a rubber-covered transfer roll. From there the inked pattern transfers to the steel substrate by passing between the transfer roll and an impression roll.

***Printech...the aesthetics of other materials with the benefits that only steel can provide.***

PROPERTY	PRINTECH COATING TEST METHOD	PRINTECH COATING SPECIFICATION
Dry Film Thickness	ASTM D 1400-94	0.75-1.85 Mil
	ASTM D 1005-95	0.90-1.15 Mil
Specular Gloss	ASTM D 523-89 @ 60°	10-15
Humidity Resistance	ASTM D 2247 (100% relative humidity @ 95°)	Passes 2,000 hrs. with no field blisters
Salt Spray	ASTM B 117 (5% salt spray @ 95°)	Passes 1,000 Hrs. with < 5% #6 blisters
Acid Pollutant Resistance	ASTM D 1308-87 (20% sulfuric acid 18 hrs., 10% muriatic acid 15 minutes)	No effect
Graffiti Resistance	Cleanability of Defaced Panels (spray paint, pens, etc.)	No effect
Abrasion Resistance	ASTM D 968-93 (to expose 5/32" of substrate)	100 Litres
Chalk Resistance	ASTM D 4214 (Florida Exposure @ 45° S)	Rating not < 8 @ 20 yrs.
Color Retention	ASTM 2244 - Hunter Units (Florida Exposure @ 45° S)	Rating not > 5Δ Hunter Units @ 20 yrs.
Adhesion	ASTM D 3359-95a (Reverse Impacted 1/16" crosshatched)	No adhesion loss
Pencil Hardness	ASTM D 3363	HB-H
Reverse Impact	ASTM D 2794-93 (3,000 x inches of metal thickness)	No cracking or loss of adhesion
Flexibility T-Bend	ASTM D 4145-83 (No crack, no pick-off)	2T bend, no loss of adhesion
Mandrel	ASTM D 522-93A (180 bend around 1/8" mandrel)	No cracking
Film Integrity		25 years - limited warranty

Hunter Units: a standard of key color scales and color values that are used by industry for color control. Oil Canning is a characteristic of metal roofing and not a cause for material rejection.

## ALL THE SELECTION. ONE SOURCE.

Effective February 2015 and replaces all previous versions. Copyright 2015. The Cascadia Metals logo is a trademark of Cascadia Metals. Information and images are the property of Cascadia Metals and/or its affiliates and may not be reproduced without express written consent.